



32 Church Street

Failsworth, Failsworth, M35 9JW

£1,100 Per month

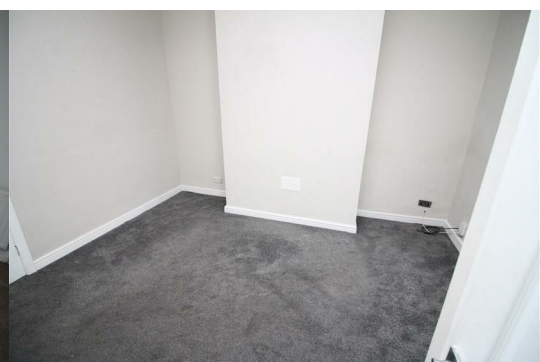
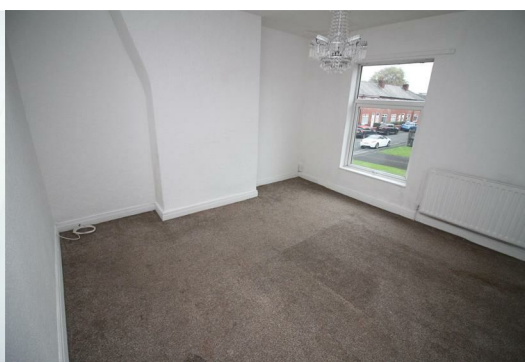


This is to present an End Terraced Two(2)Bedroom House in the earth of Failsworth. The ground Floor comprises of Front living Area , Diner and Kitchen. The top Floor comprises of a large Bedroom , Single Bedroom and a well tiled Bathroom. The property benefits from Upvc Window, central gas heating System, carpet and Laminated flooring.

Proximity to M60 Motorway, Manchester City Centre , Surgery, Local Stores. Good Transport link.

Externally: A Rear Yard.

Call us today for viewing arrangements.



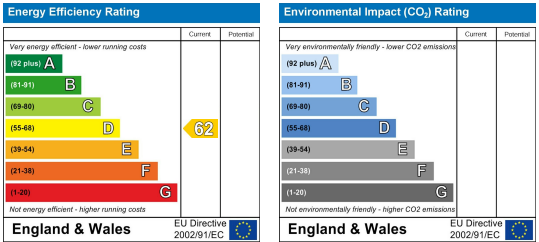
Area Map



Floor Plans



Energy Efficiency Graph



These particulars, whilst believed to be accurate are set out as a general outline only for guidance and do not constitute any part of an offer or contract. Intending purchasers should not rely on them as statements of representation of fact, but must satisfy themselves by inspection or otherwise as to their accuracy. No person in this firms employment has the authority to make or give any representation or warranty in respect of the property.